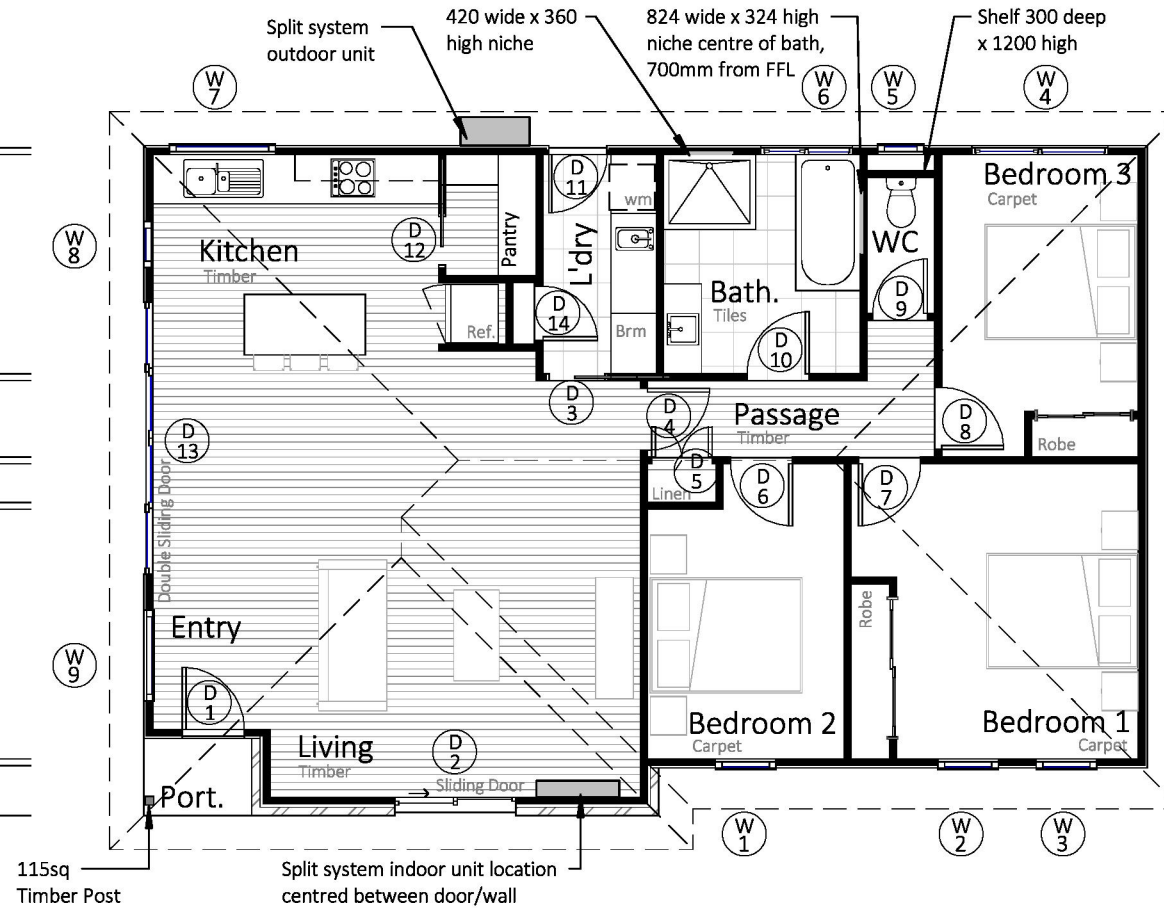
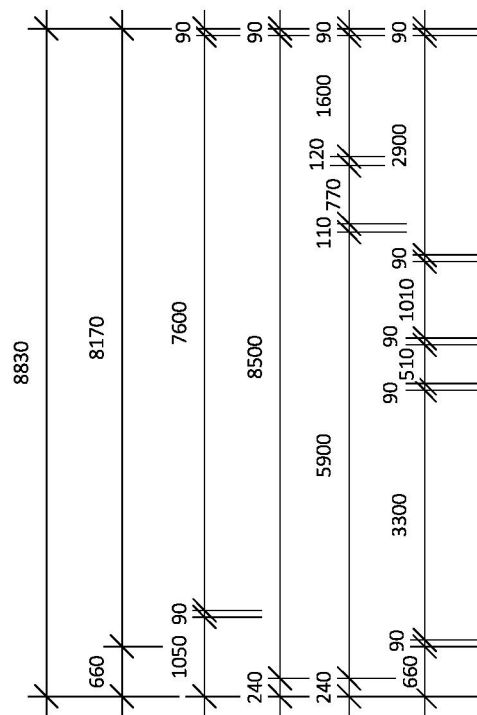
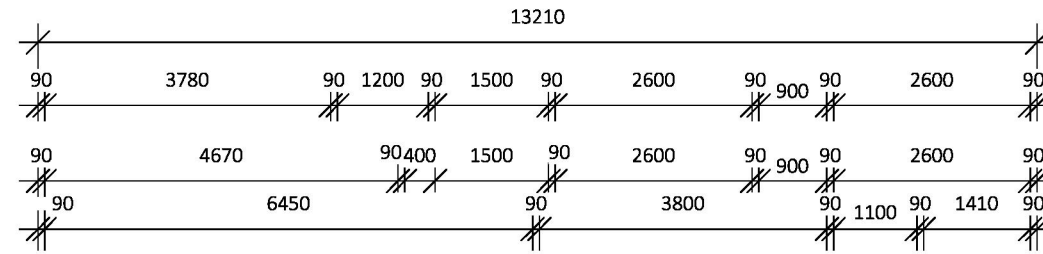
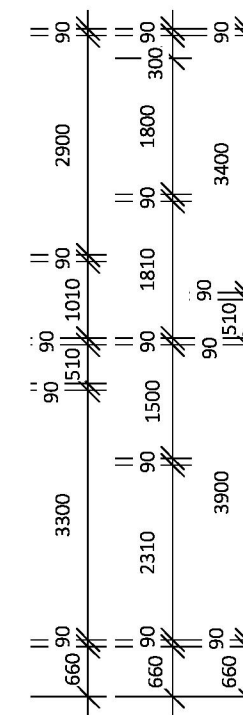


AREA ANALYSIS		
Name	Area	SQ'S
Residence	111.83 m ²	12.03
Portico	1.67 m ²	0.18
	113.50 m ²	12.21

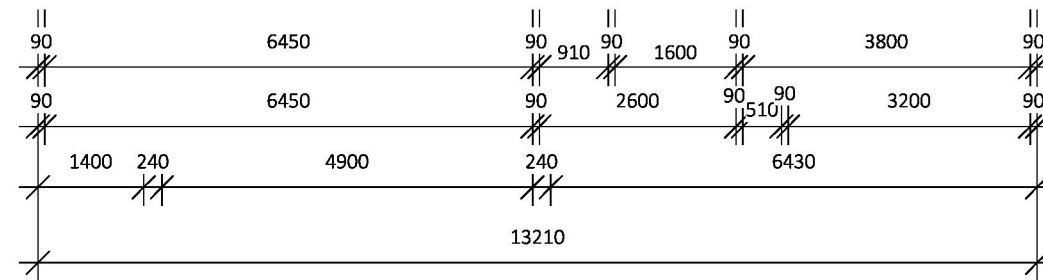


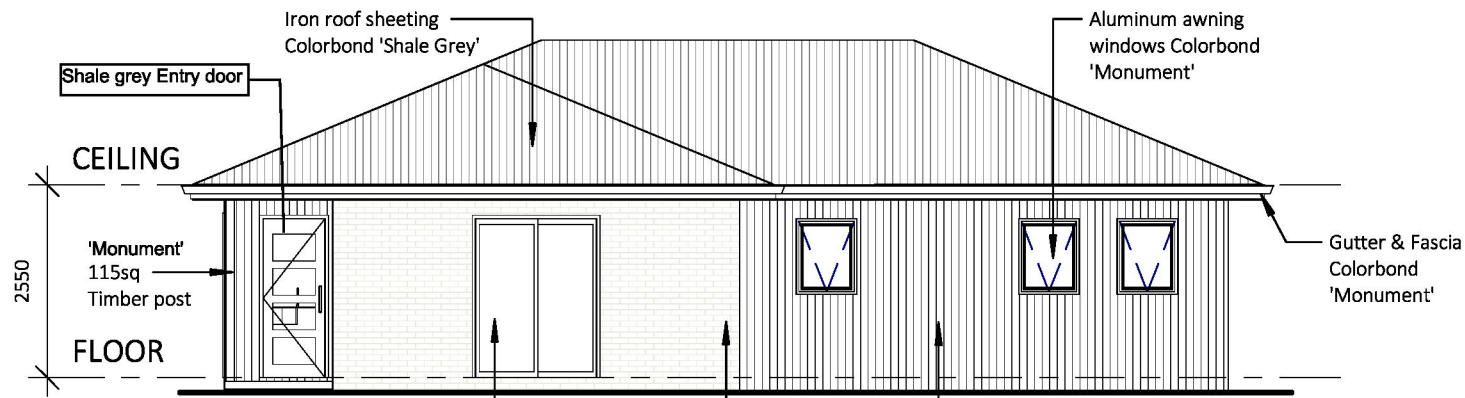
LEGEND

- 240MM BRICK VENEER WALLS
- CORRUGATED IRON ON 90MM STUD WALLS
- 90MM STUD WALLS

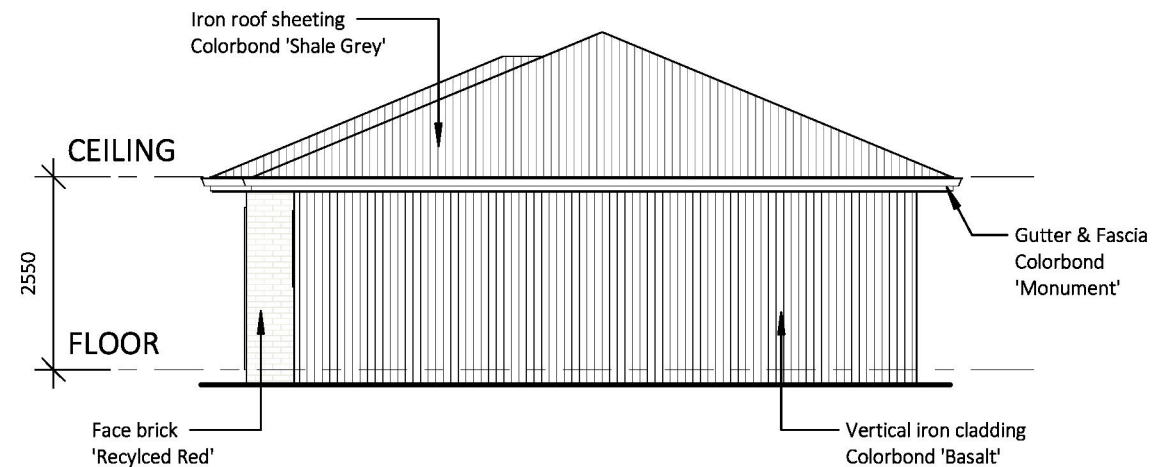


FLOOR PLAN
1 : 100

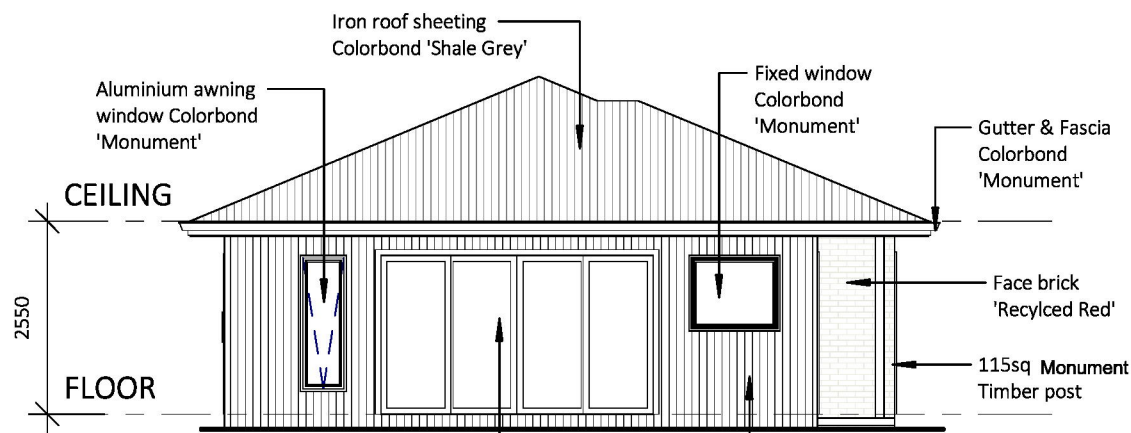




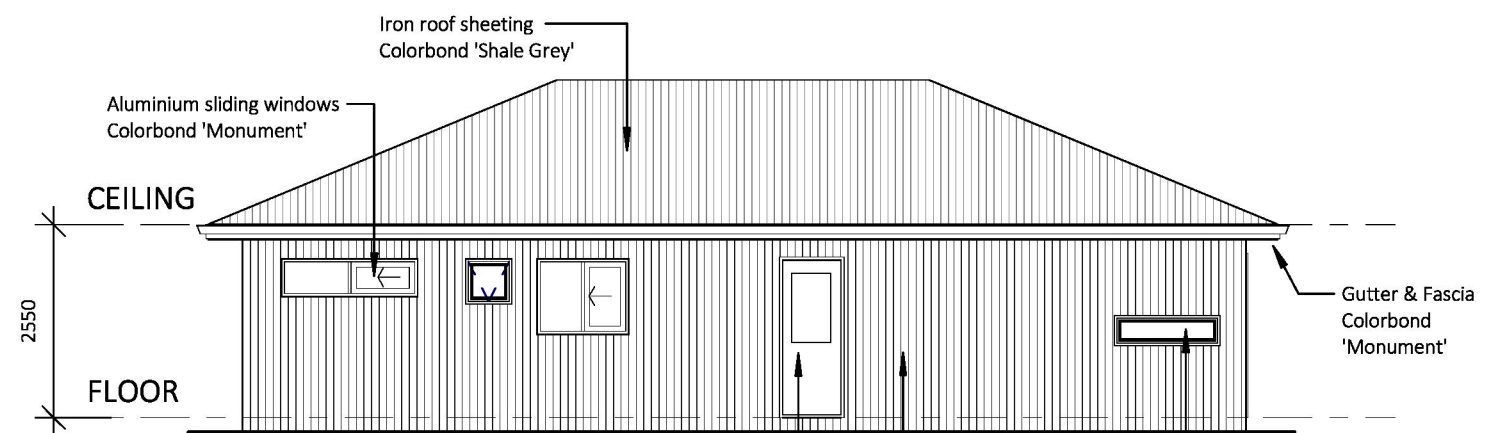
West Elevation
1 : 100



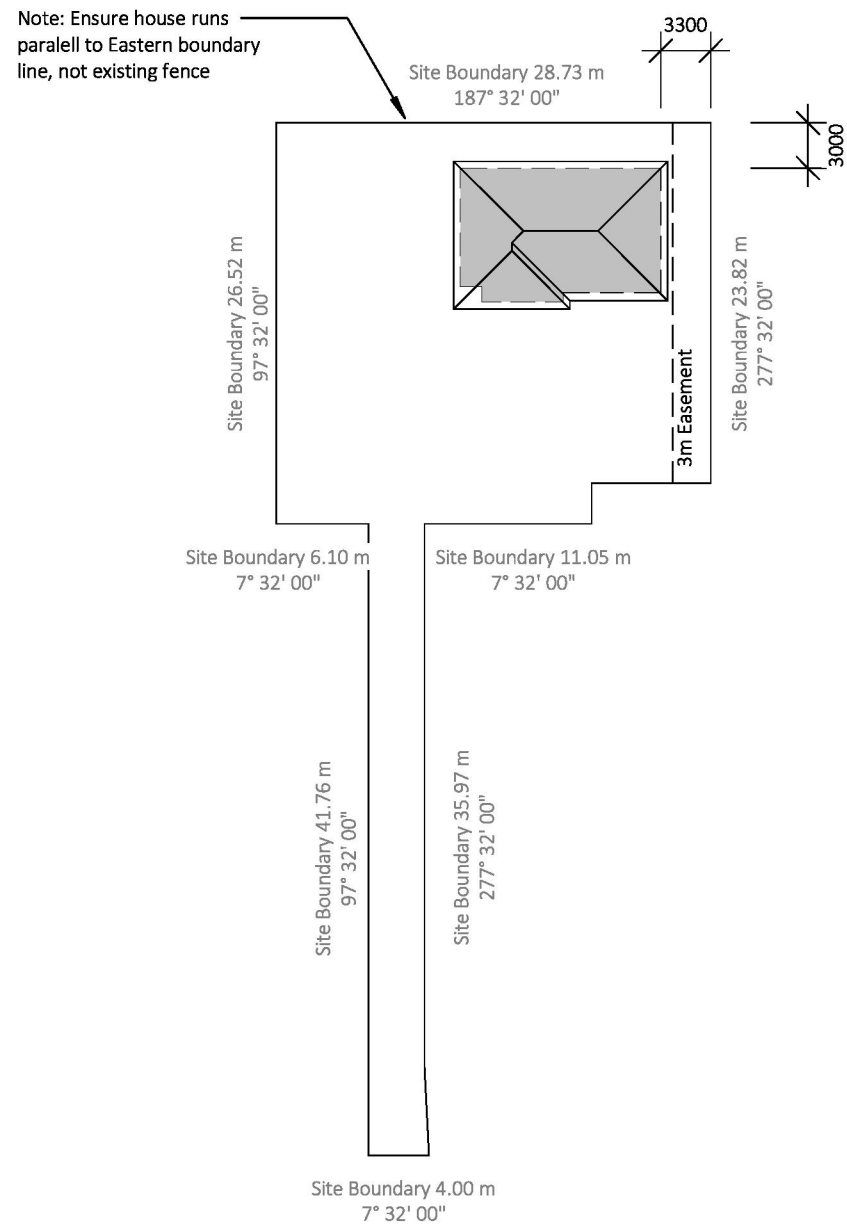
South Elevation
1 : 100



North Elevation
1 : 100



East Elevation
1 : 100



Princes Hwy

SITE PLAN
1 : 500

DOOR SCHEDULE			
Mark	Height	Width	Description
1	2100	820	Feature entry door
2	2100	1600	Al. sliding door
3	2040	1640	820 Cavity sliding door
4	2040	820	Int. hinged door
5	2040	800	Double doors
6	2040	820	Int. hinged door
7	2040	820	Int. hinged door
8	2040	820	Int. hinged door
9	2040	720	Int. hinged door
10	2040	820	Int. hinged door
11	2040	770	Ext. Semi Glazed Hinged Door
12	2040	1440	720 Cavity sliding door
13	2100	3600	Al. sliding doors
14	2040	720	Int. hinged door

WINDOW SCHEDULE			
Mark	Height	Width	Description
1	1000	800	Al. awning window
2	1000	800	Al. awning window
3	1000	800	Al. awning window
4	500	1800	Al. sliding window
5	600	610	Al. awning window
6	1000	1210	Al. sliding window
7	400	1400	Al. fixed window
8	1800	610	Al. awning window
9	1000	1200	Al. fixed window

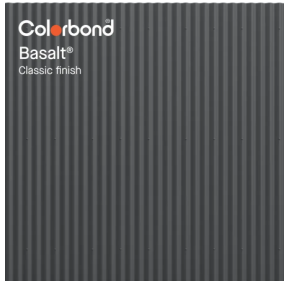




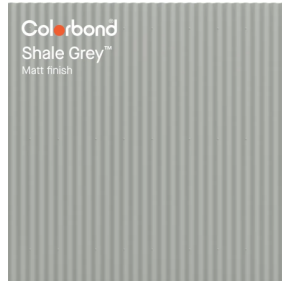
Feature wall at entrance:
Recycled brick (as selected)



Fascia, windows, trim



Walls (other): Vertical
Colorbond Basalt



Roof: Colorbond Shale Grey

MATERIALS SCHEDULE

2/71 Princes Highway Port Fairy VIC 3284



LANDSCAPE PLAN Lot 2) 71 Princes Highway. Port Fairy.

KEY

1. Almond (*Prunus dulcis*) - existing
2. Hop Wattle (*Acacia stricta*) up to 3m high
3. Scented Paperbark (*Melaleuca squarrosa*) up to 12m high
4. Weeping paperbark (*Malaleuca leucadendra*) - existing
5. English Walnut (*Juglans regia*) - existing
6. Myrtle wattle (*Acacia myrtifolia*) 2-4m high
7. Hedge wattle (*Acacia Paradoxa*) 2-4m high
8. Sweet Bursaria (*Bursaria spinosa*) up to 2m high
9. Hop Wattle (*Acacia stricta*) up to 3m high
10. Scented paperbark (*Malaleuca squarrosa*) up to 12m high



Silver banksia (*Banksia marginata*) (x9) up to 5m high



High quality lawn



Recycled solid red brick path and paved area



Edging of Spiny-headed mat rush (*Lomandra longifolia*)



Parking (11 x 8.5m - 93.5sqm) Crushed rock



Garden shed existing



Existing Driveway – (crushed rock- completed to a high standard) 4m wide



Raised vegetable garden beds (timber construction)



Existing 1.8m timber paling fence (supporting planting of *Hardenbergia violacea*)



1.8m timber frame fence supporting planting of *Hardenbergia violacea* with single row of Wattle mat rush (*Lomandra filiformis*) - under construction.



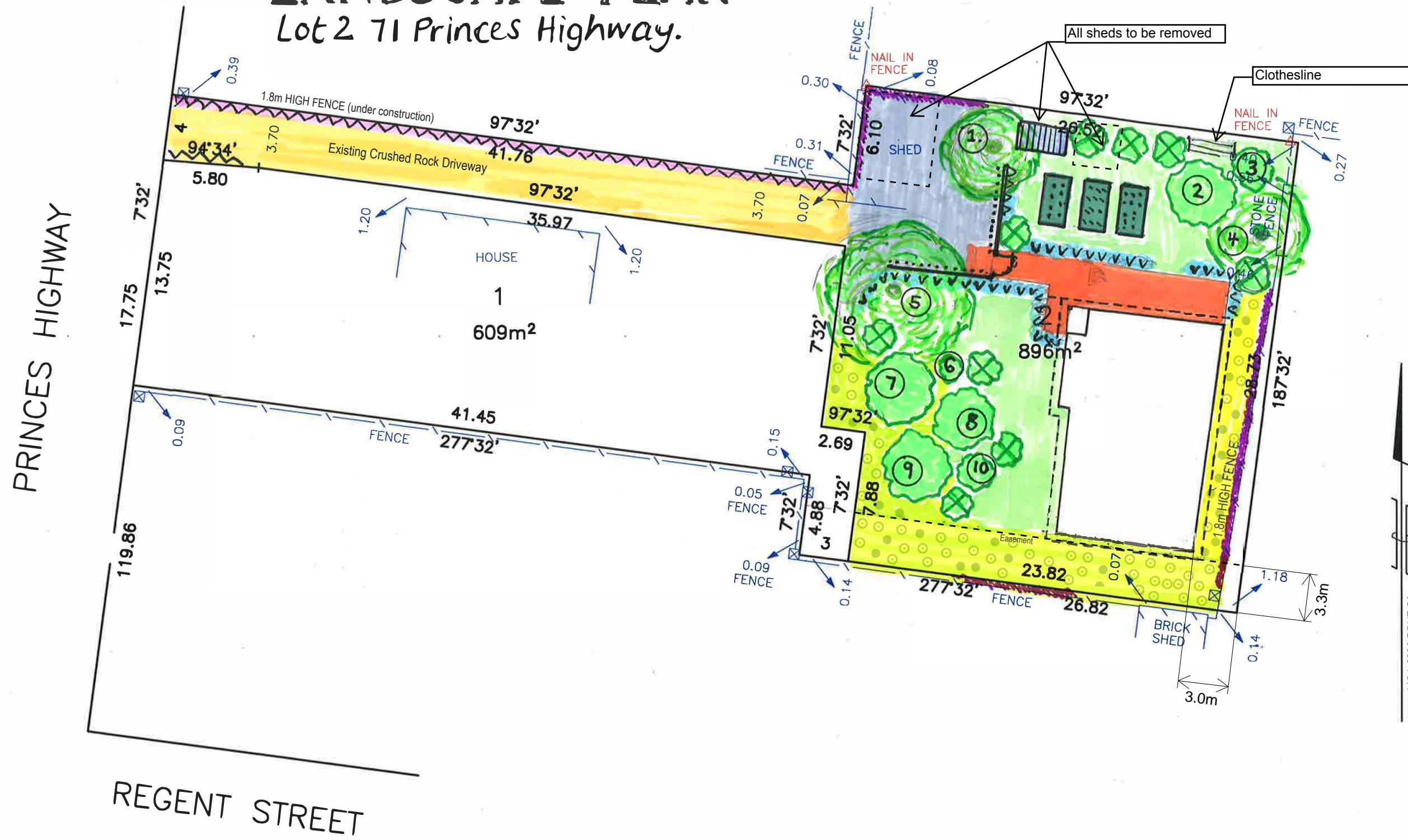
Proposed 1.8m Timber frame fence supporting planting of Sweet Jasmine (*Jasminum suavissimum*) & Wattle Mat rush (*Lomandra filiformis*)



Native grasses (Common and Bristly Wallaby grass, Tall Spear grass, Common wheat grass, Weeping grass, Velvet and Grey Tussock grass. up to 1m high

LANDSCAPE PLAN

Lot 2 71 Princes Highway.



SURVEYORS REF:2242