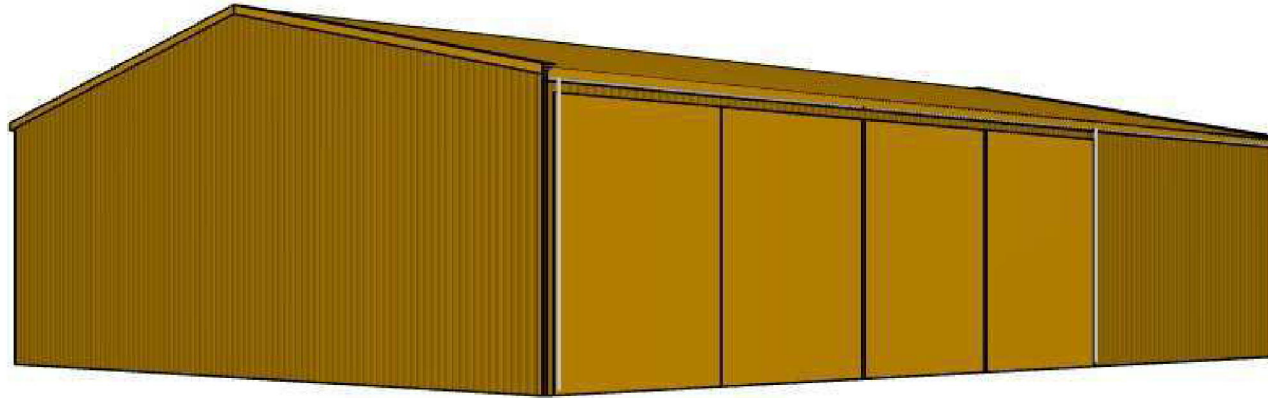


BASIC SPECS

Importance Level: 2
 Shed Usage: Domestic
 Shielding: 1.0
 Wind Region:
 Region A6; T.C. - 2.10
 Design Wind Speed: 41m/s
 Pitch: 11.5
 Width: 15000
 Length: 20436
 Height: 4500
 Max Height: 6026
 Maximum Bay Size: 3350
 Base Connection:
 Column In Ground
 Standard Frame: C30024
 Serviceability Tests Passed
 Purlin: TH12010
 Girt: TH12010
 Girt: TH12010
 Roof Sheeting: Corro 0.42
 Coverage 762
 Wall Sheeting: MonoClad 0.42
 Coverage 762

Please Observe Building Orientation



BASIC SPECS

Importance Level: 2
Shed Usage: Domestic
Shielding: 1.0
Wind Region:
Region A6; T.C. - 2.10
Design Wind Speed: 41m/s
Pitch: 11.5
Width: 15000
Length: 20436
Height: 4500
Max Height: 6026
Maximum Bay Size: 3350
Base Connection:
Column In Ground
Standard Frame: C30024
Serviceability Tests Passed
Purlin: TH12010
Girt: TH12010
Girt: TH12010
Roof Sheeting: Corro 0.42
Coverage 762
Wall Sheeting: MonoClad 0.42
Coverage 762



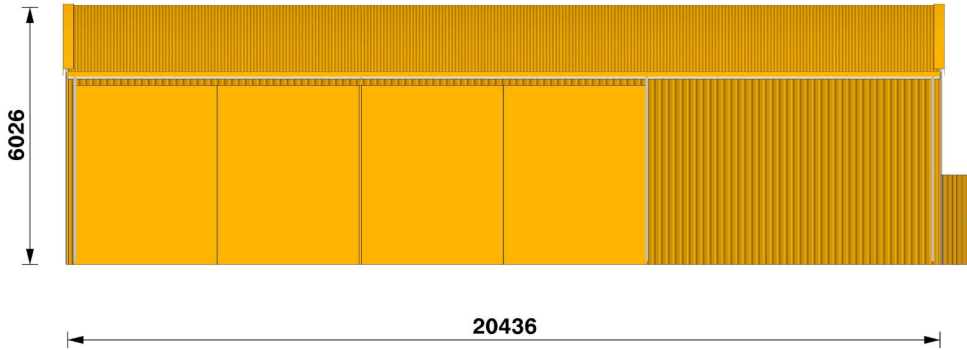
Elevations

Silvaline Gable Garage
Customer Name: [REDACTED]
Site Address: - 7 Conns Lane, Dennington VIC

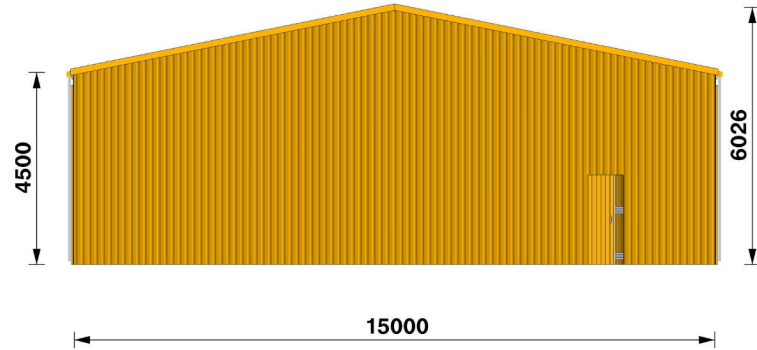
QikShed Version 3.1 - [11/11/10/24]
Invoice No: - 0
Order No: - SHDGA2-324402069
Date Proc: - 22/11/24

BASIC SPECS

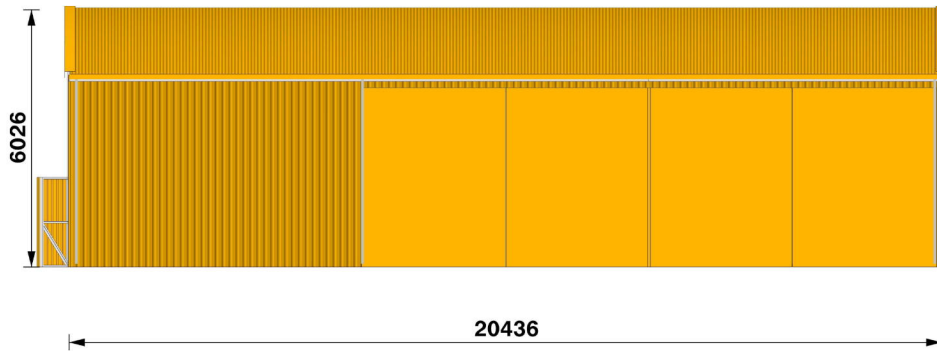
Importance Level: 2
Shed Usage: Domestic
Shielding: 1.0
Wind Region:
Region A6; T.C. - 2.10
Design Wind Speed: 41m/s
Pitch: 11.5
Width: 15000
Length: 20436
Height: 4500
Max Height: 6026
Maximum Bay Size: 3350
Base Connection:
Column In Ground
Standard Frame: C30024
Serviceability Tests Passed
Purlin: TH12010
Girt: TH12010
Roof Sheeting: Corro 0.42
Coverage 762
Wall Sheeting: MonoClad 0.42
Coverage 762



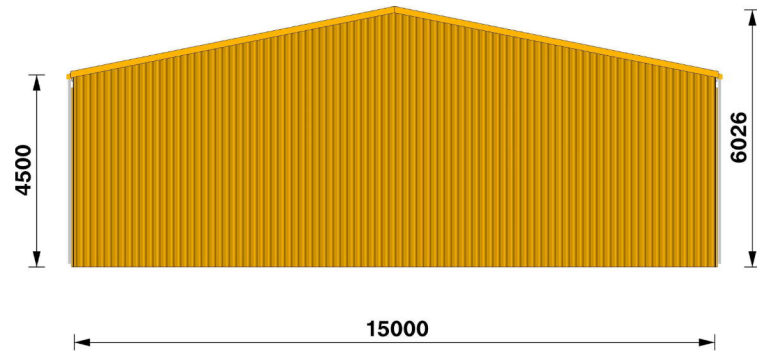
South West



South East



North East



North West

Presentation Only; Not for Construction Purposes.

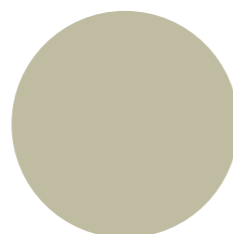
Classic finish



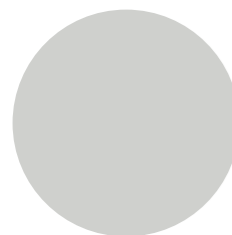
Dover White™
Classic finish
SA = 0.28



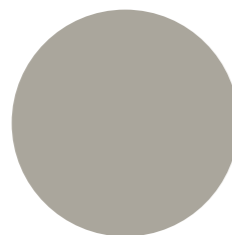
Surfmist®
Classic finish
SA = 0.33



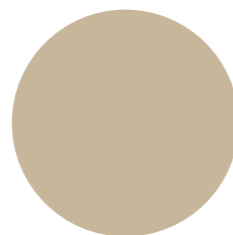
Evening Haze®
Classic finish
SA = 0.43



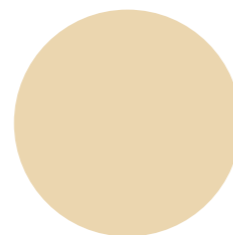
Southerly®
Classic finish
SA = 0.40



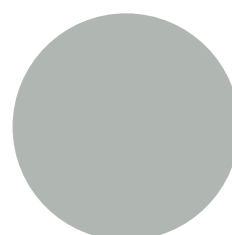
Dune®
Classic finish
SA = 0.48



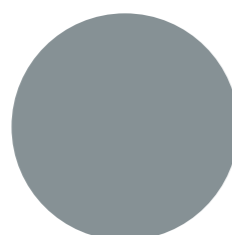
Paperbark®
Classic finish
SA = 0.43



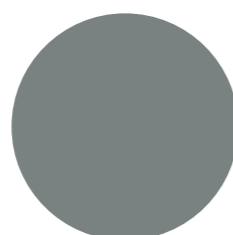
Classic Cream™
Classic finish
SA = 0.33



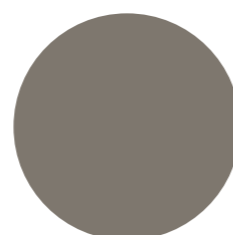
Shale Grey™
Classic finish
SA = 0.44



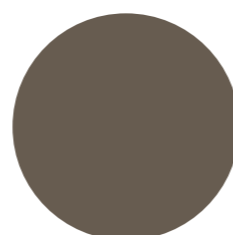
Bluegum®
Classic finish
SA = 0.57



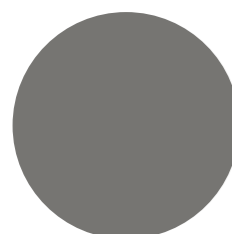
Windspray®
Classic finish
SA = 0.60



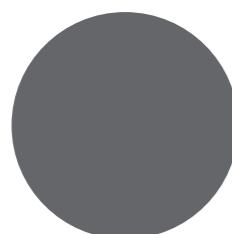
Gully®
Classic finish
SA = 0.64



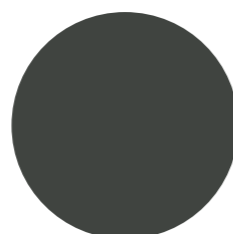
Jasper®
Classic finish
SA = 0.67



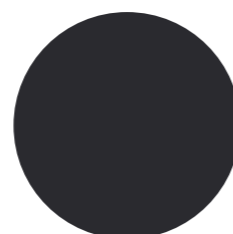
Wallaby®
Classic finish
SA = 0.64



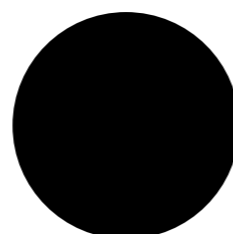
Basalt®
Classic finish
SA = 0.67



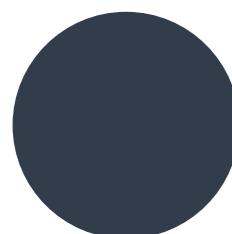
Woodland Grey®
Classic finish
SA = 0.70



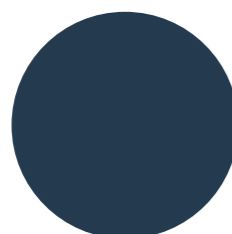
Monument®
Classic finish
SA = 0.73



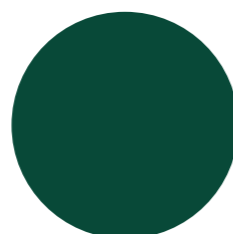
Night Sky®
Classic finish
SA = 0.95



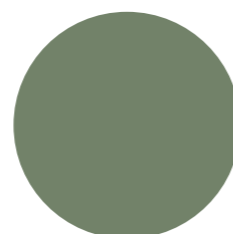
Ironstone®
Classic finish
SA = 0.73



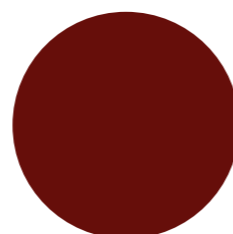
Deep Ocean®
Classic finish
SA = 0.74



Cottage Green®
Classic finish
SA = 0.73

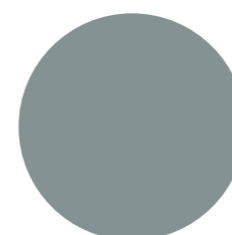


Pale Eucalypt®
Classic finish
SA = 0.60



Manor Red®
Classic finish
SA = 0.70

Matt finish



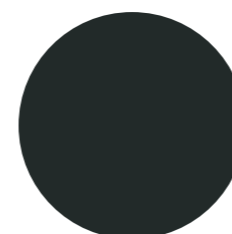
Bluegum®
Matt finish
SA = 0.59



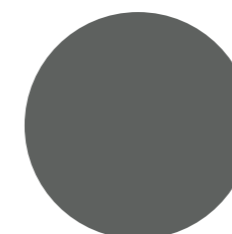
Shale Grey™
Matt finish
SA = 0.46



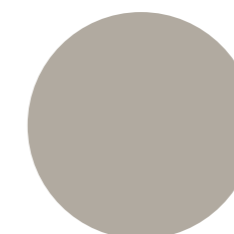
Surfmist®
Matt finish
SA = 0.35



Monument®
Matt finish
SA = 0.79



Basalt®
Matt finish
SA = 0.71



Dune®
Matt finish
SA = 0.48



COLORBOND® STEEL CORE COLOURS

With 22 pale, mid and deep toned COLORBOND® steel core colours, and six colours also available in a premium Matt finish, you can enjoy the process of discovering the perfect colour scheme and design palette for your dream home.

Select from these colours for your roofing, walling, fascias, gutters, downpipes and garage doors.

For further colour inspiration visit COLORBOND.COM

Legend

SA = (Solar Absorptance) is a measure of how much of the sun's heat that a material absorbs. Choosing a colour with a lower SA is a cooler option and may help you meet building regulations such as NCC or BASIX. These are nominal values based on new product and measured in accordance with ASTM E 903-96.

U Available in COLORBOND® Ultra steel for coastal and industrial environments. Other colours in the Classic finish may be available on request.

SILVALINE

STRUCTURES

FARM SHEDS AND COVERS

Silvaline Structures have a wide range of buildings that will meet your requirements, including Machinery Sheds, Yard Covers, Woolsheds and Haysheds to name a few. Due to the wide range of fodder and equipment sizes, Silvaline Structures have the ability to provide uneven bay sizes, heights and roof pitches to suit each individual case.

All buildings come fully engineered, pass all serviceability tests and are certified to Australian Standards, combined with high quality Australian products, our Silvaline Structures are second to none.

We have a large range of optional extra's such as:

- Open Bays, closed bays or both
- Partition Walls
- Colorbond or Zinalume Finish
- Wind Regions A,B,C or D
- Bay Sizes to your requirements
- Lock up Workshops
- Steel Sliding Doors or Roller Doors
- Personal Access Doors
- Open Gables



Silvaline is a leading manufacturer of premium built sheds. We pride ourselves on our quality of workmanship, customer service, integrity and value for money.

Your local distributor is:

SILVALINE

STRUCTURES

DOMESTIC

Silvaline Structures will help tailor a domestic Garage or Shed to suit your needs. There is no job too big or too small, every building is individually designed with site specific engineering which ensures high quality and a competitive price.

Height, Span and bay width are all adjustable, so whether you're after a Garage, Carport or Verandah, Silvaline Structures will have the right building for you.

We have a large range of optional extra's such as:

- Roller Doors of all sizes
- Glass Sliding Doors
- Security & Flyscreens
- Spinaway roof ventilators
- Electric door closers with remotes
- Skylights
- Steel Sliding Doors
- Personal Access Doors
- Windows
- Roof & Wall Insulation
- Awnings
- Horizontal Cladding



*Silvaline is a leading manufacturer of premium built sheds.
We pride ourselves on our quality of workmanship,
customer service, integrity and value for money.*

Your local distributor is: